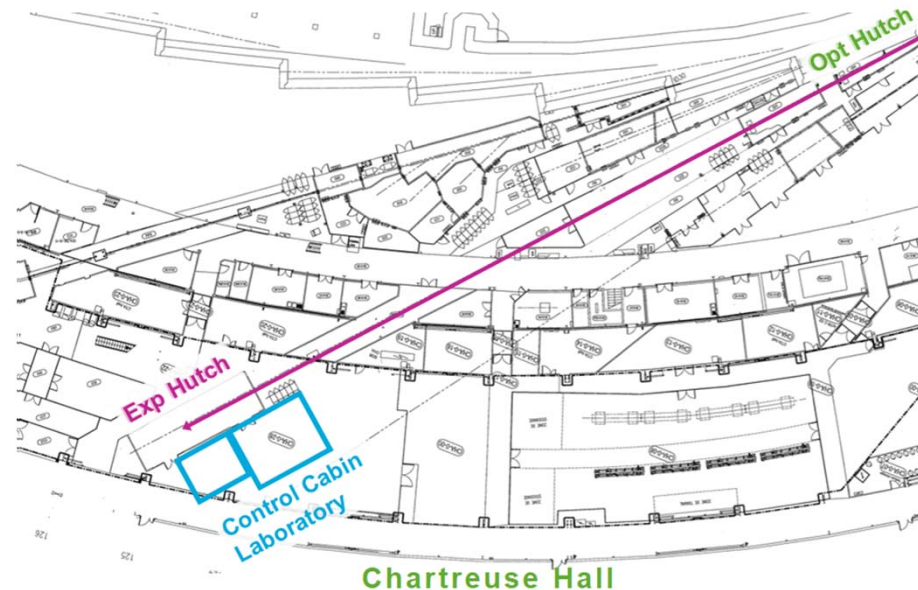




| The European Synchrotron

December 10th 2018 – 25th August 2020

- Reduction of horizontal emittance by a factor of ~ 30 (4 nm to ~ 134 pm)
 - Increased brilliance and coherence of ESRF X-ray beams
 - (Fitter, happier) more productive beamlines; new experiments
 - more use of automation
 - (TR-)SSX for ID29 (EBSL8; Daniele de Sanctis)



What is/will be new in 2018?

- **CM01 Cryo-EM (Isai Kandiah)**
 - TMV at 2.45 Å resolution
 - 1st users in November 2018
 - Will operate during EBS shutdown
- **MXCuBE3 (Marcus Oskarsson)**
 - web-based replacement for MxCuBE2
 - better remote access experience
- **Payment for dewar shipments (Matthew Bowler)**
 - Both to & from ESRF
 - remote access only
 - either/or basis (1 person or one dewar)



Some Points for discussion: BAG Meeting 2018

- **Future BAG Meetings**

- Are they useful?
- How can we 'reinvigorate' them?
- Do we need one in February 2020?

- **SB at ESRF in August 2020**

- "core" beamlines (ID30A/B + ID23-1/2 + BM29 + CM01 + Cryobench)
- ID29 (TR-)SSX

- **What do our users (i.e. you!) need that we don't provide?**

- What would you like more (or less) of?
- What could we do better?

- **What will SB at ESRF look like in August 2025?**

- Will we have the same number of beamlines?
- Should any beamlines be 'repurposed'?