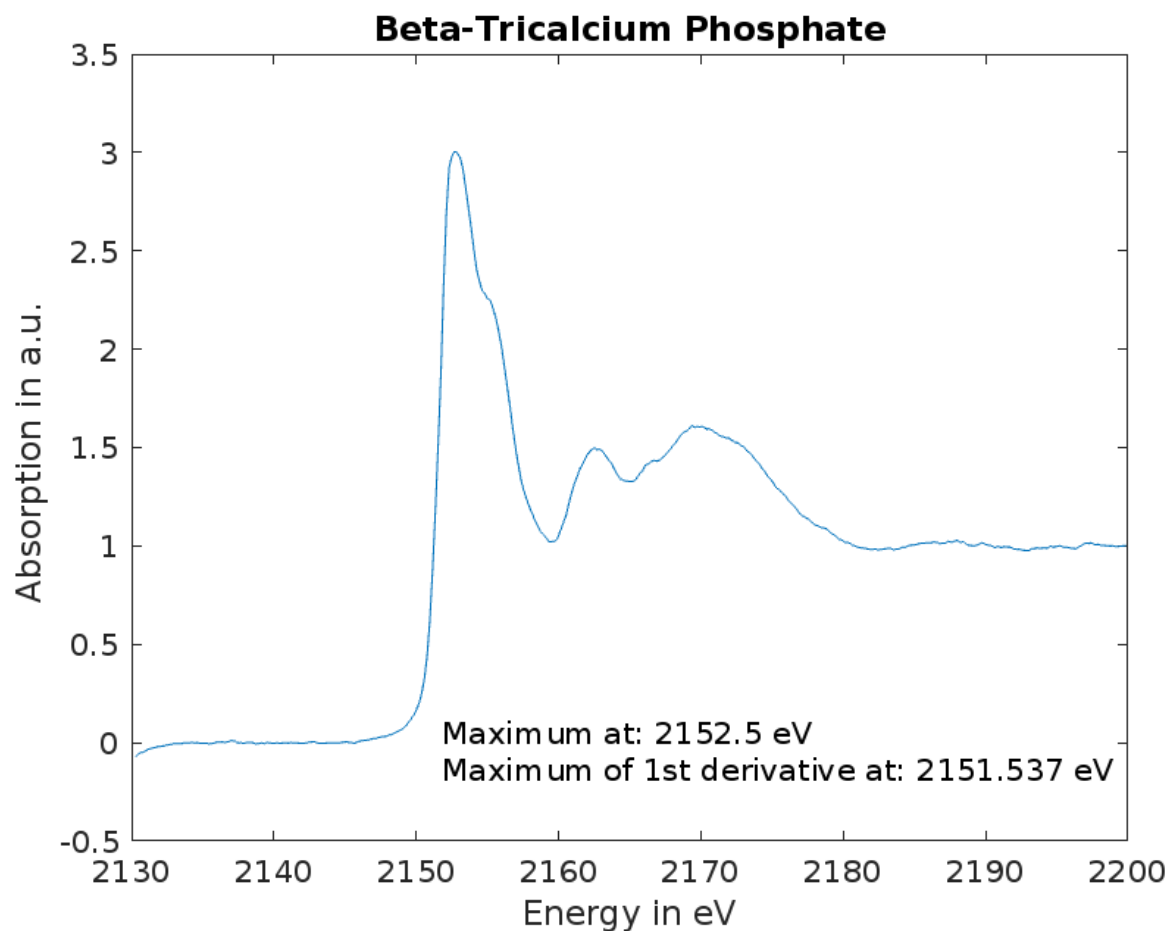


Beta-Tricalcium phosphate



Formula: $\beta\text{-Ca}_3(\text{PO}_4)_2$

Origin: **Sigma-Aldrich**

CAS: 7758-87-4

Acquisition mode: **transmission**

Monochromator: **Si(111)**

The monochromator energy was calibrated against the “white line” of tricalcium phosphate ($\text{Ca}_3(\text{PO}_4)_2$) at **2152.7 eV**.

Contact Person: **Christian Vogel**

Author: **Vogel et al. 2018**

Journal: **Ambio (2018) 47(Suppl 1): 62. <https://doi.org/10.1007/s13280-017-0973-z>**

Comments:

Additional Information: