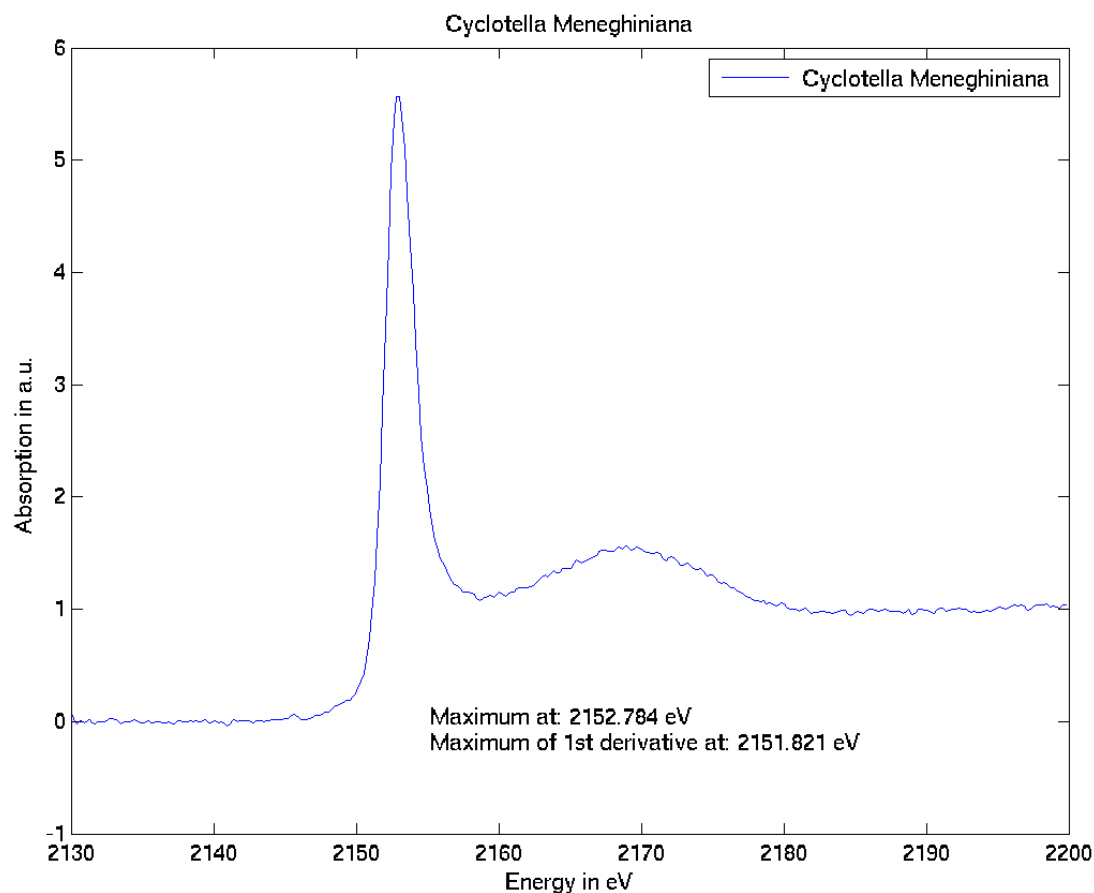


Cyclotella Meneghiniana (diatoms)



Phosphorus type: **Aquatic organic phosphorus (algae) – concentrated in the cell's nucleus (Twining et al., 2003)**

Origin: **Laboratory culture (INRA-CARTEL)**

CAS: -

Acquisition mode: **fluorescence**

Monochromator: **Si(111)**, calibrated in energy by fixing the position of the maximum of the white-line of hydroxyapatite ($\text{Ca}_5(\text{PO}_4)_3(\text{OH})$) at **2152.7 eV**

Max of the “white-line” (s → p electronic transition) at **2152.784 eV**

Max of the first derivate (taken for normalisation) at **2151.821 eV**

Contact Person: **Charline Giguet-Covex**

Author: **Giguet-Covex, Poulénard, Chalmin, Arnaud, Rivard, Jenny, Dorioz**

Journal: **Geochimica et Cosmochimica Acta, Volume 118, Pages 129–147**

Comments:

Additional Information: