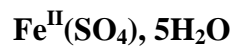
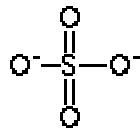


S⁶⁺

Siderotil



Mineralogical Group: **sulfate (VI-29-6)**
S environment: **tetrahedral coordinance**
Crystal system: **triclinic (P-1)**



Origin: **Puis Alfredo, Rio Tinto, Spain**
Chemical composition:

Preparation of sample: **thin layer of powder**

Crystallinity state:

Acquisition mode: **transmission (fluorescence)**

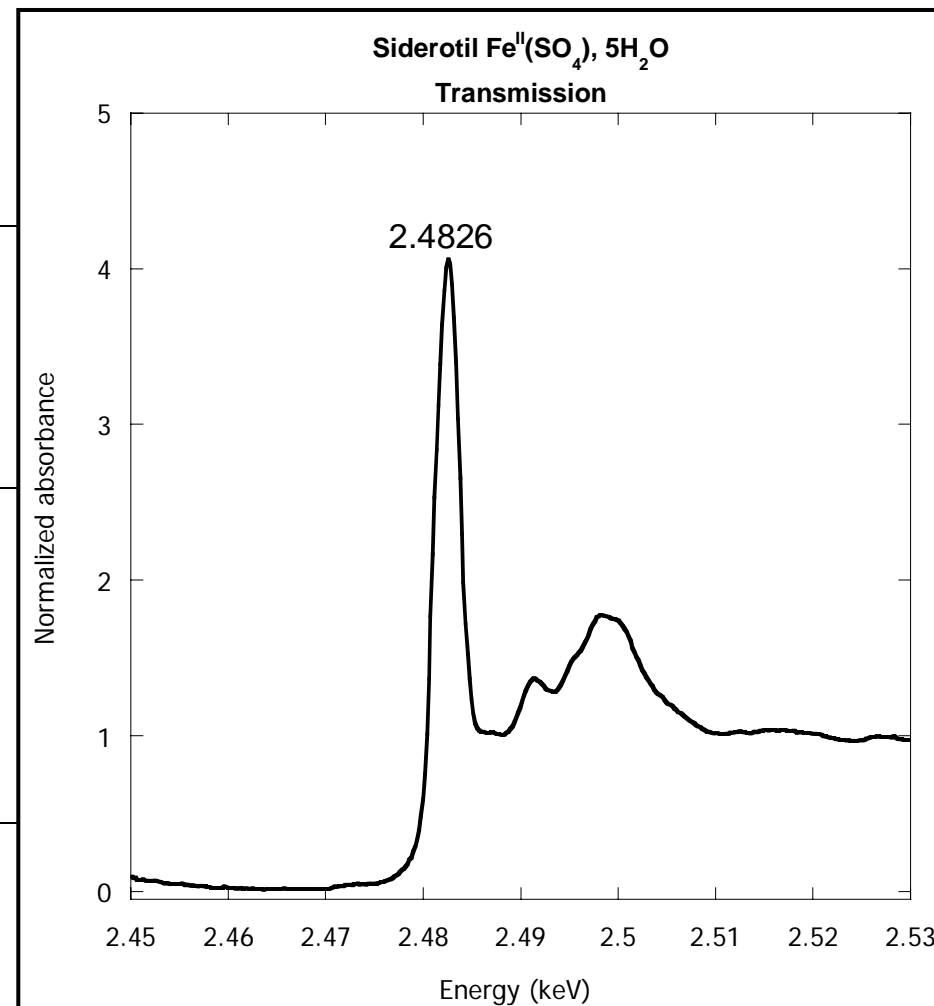
Date of acquisition: **18/05/2006**

X-ray absorption data (normalized): [siderotil_trans_norm.dat](#)

Calibration with CaSO_4
Max of the “white-line” (s → p electronic transition) at **2.4824 KeV**

Contact person: Koen Janssens

Author
Journal



Comments : kindly provided by the French MNHN

Additional information : rozenite?