

User single entry point to ESRF and ILL

ESRF, 29 May 2008

Special requirements for Safety

P. Berkvens, ESRF Safety Group

Involvement of ESRF Safety Group in the Experimental Programme

- ✚ Before the Experiment
 - o Safety review of proposals
 - o Liaison with French authorities
 - o Safety training
- ✚ During the experiment
- ✚ After the experiment

Safety Review of Experiments Before the experiment

Evaluation of all applications for beamtime by ESRF

Safety Group:

- + ESRF user programme
 - o 2 proposal rounds (March, September)
 - o ~ 2000 proposals per year
- + Industrial research
- + CRG user programme
- + ESRF and CRG in-house research
- + MX experiments: evaluation of sample sheets
- + Liaison with ESRF Internal Evaluation Committee on Animal Welfare in Research
- + Preparation of "Safety Letters"

Before the experiment

ESRF Safety Group liaises with French authorities

- + French Ministry of Research
 - o Use of samples of human origin
- + AFSSAPS (*Agence Française de Sécurité Sanitaire des Produits de Santé*):
 - o Use of biological agents responsible for infectious diseases, pathogenic micro-organisms and toxins

Before the experiment

ESRF Safety Group liaises with French authorities

- ✚ French Nuclear Authority
 - o Use of radioactive samples
 - o Specific safety analysis of individual experiments

- ✚ IRSN (Institut de Radioprotection et de Sûreté Nucléaire):
 - o Temporary authorisations for importation / exportation of radioactive samples

Before the experiment

ESRF Safety Group liaises with French authorities

- ✚ SGDN (Secrétariat Général de la Défense Nationale)
 - o Non-proliferation of nuclear and biological weapons
 - Screening of proposals
 - Approval of publications
- ✚ DST (Direction de la Surveillance du Territoire)
 - o Screening of users (experiment dependent)
 - o ESRF Safety Group and ESRF Personnel Service

Safety Training for Users

Before the experiment

- ✦ Obligatory for all ESRF and CRG users, including in-house research and industrial research
- ✦ Safety training available on the web
- ✦ Automatic link to A-form
- ✦ Validity 1 year
 - ✦ ESRF emergency procedures
 - ✦ General safety rules concerning experiments
 - ✦ Radiation protection
 - ✦ Personnel Safety Systems
- ✦ Special safety training for MX remote access experiments

During the experiment

Controlled access badges

- + Data base managed by ESRF Safety Group
- + Distribution of badges by ESRF Reception, Site Entrance and ESRF Safety Group

Written general safety instructions given to users upon their arrival on site.

Safety follow-up during experiment

- + Done by ESRF Safety Group

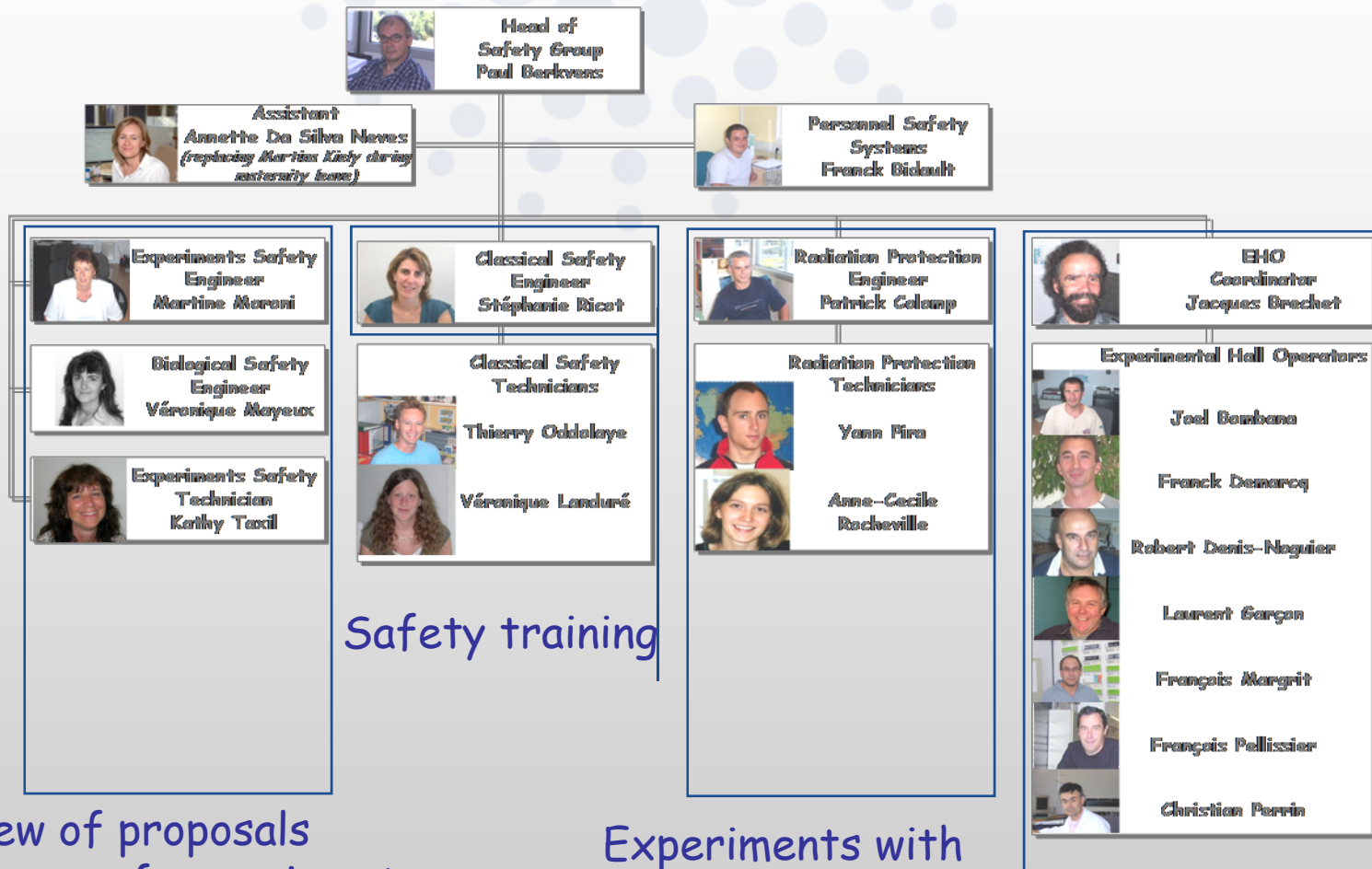
After the experiment

Return transport of samples from the ESRF

- ✚ Airport "clearance" forms for biological samples
- ✚ Return shipment of radioactive samples

- ✚ Occasional approval of publications
- ✚ Occasional dosimetry report to home institute

ESRF Safety Group



Safety training

Review of proposals
Follow up of experiments
Liaison with authorities for
MX experiments

Experiments with
radioactive samples

Safety follow up during
experiments