

Chemical controls on the solubility of metal bearing phases in hydrothermal solution

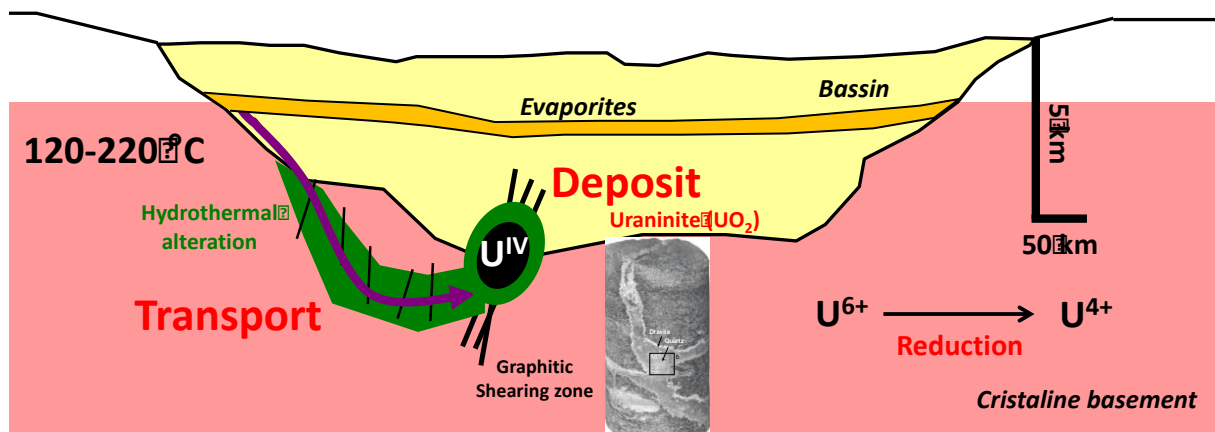
L. Truche

ISTerre, University Grenoble Alpes, CNRS

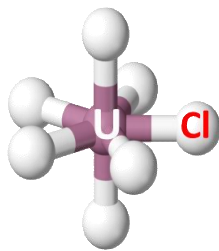
In this lecture, I will address the following topics:

- How do we form an ore deposits?
- Chemical composition of hydrothermal fluids,
- Water properties at elevated T-P,
- Metal complexation and mineral solubility in aqueous solution,
- How to study metal speciation in hydrothermal fluids?

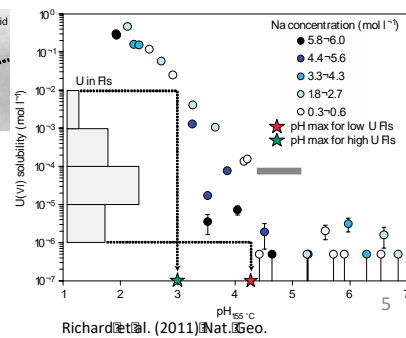
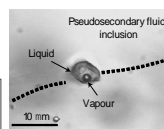
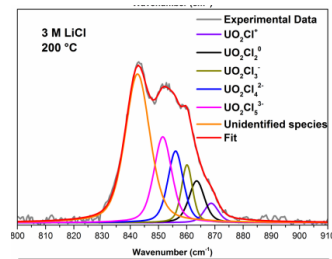
Genetic model for unconformity U ore deposits



Mercadier et al., 2011, Mineralium Deposita



Dargent et al. (2013), JEM



Richard et al. (2011), Nat. Geo.